

job name:
 type:

18"/24" wāf.r.3™ ceiling spec sheet 90CRI

material

trim ring
 minimal 3" h roll formed aluminum extrusion. 6061 T1 alloy. .100 typ. wall. available in 15 standard powder coat paint finishes listed below. premium RAL and wood finishes also available.

diffuser

satinice WD855 72% light transmission, light scattering, glare reduction, colorless diffusion acrylic.

optics

reflector
 .064" aluminum array platform painted high reflectance (>92%) matte white powder coat provides 100% downlight. for uplight, specify under options.

LED

specification-grade LED modules with integrated wide angle optics to minimize diffusion depth and increase illumination uniformity. 90+ CRI. L80>72,000 hrs. 3000K, 3500K, 4000K.

driver

integral, programmable, UL class P, class2, universal input (120-277v), constant current, 0-10v controllable, 1% minimum dimming level.

mounting

designed to mount to 4 inch octagon junction box (by other). consult factory for installation instructions.

emergency

recommend use of inverter (by other). optional WREM: wired for remote EM battery (by other).



catalog number

--	--	--	--	--

size	CCT	lumens	painted finish	options
C5618	30 3000K	FX 1350 lm	AP anodized paint	UP uplight
C5618.BABA	35 3500K	LO 2350 lm	BS brass	WREM wired for remote EM battery pack (by other) (see note above)
18" dia X 3" ht	40 4000K	HI 2700 lm	BU blue	ELD EldoLED*
		CL xxxx lm custom lumens consult factory 1350 - 3000 lm	BZ bronze	LUT Lutron* *consult factory
	RGBW35*	RGBW 3500K	CP champagne	
	TW2765*	tunable white 2700K - 6500K	FB flat black	
C5624	30 3000K	FX 2700 lm	GM gun metal	
C5624.BABA	35 3500K	LO 4100 lm	MB military blue	
(2ft) 24" dia X 3" ht	40 4000K	HI 4900 lm	MW matte white	
See p.2 for info on P5636 & P5648		HX 7000 lm	OR orange	
		CL xxxx lm custom lumens consult factory 2700 - 7000 lm	RD red	
	RGBW35*	RGBW 3500K	SB satin black	
	TW2765*	tunable white 2700K - 6500K	SS satin silver	
	*see page 4 for more information		TG textured gray	
			YO yellow	
			premium finish	
			RAL specify RAL#	
			wood finish	
			ASH ashwood	
			ENG english brown oak	
			ESP espresso	

This product meets the guidelines for the Build America, Buy America Act. Some Exclusions Apply. For more information and full list of eligible SKUs, please contact the factory at info@impactitg.com



job name:
 type:

36"/48" wāf.r.3™ ceiling spec sheet 90CRI

material
trim ring
 minimal 3" h roll formed aluminum extrusion. 6061 T1 alloy. .100 typ. wall.

diffuser
 satinice WD855 72% light transmission, light scattering, glare reduction, colorless diffusion acrylic.

optics
reflector
 .080" aluminum array platform painted high reflectance (>92%) matte white powder coat provides 100% downlight. for uplight, specify under options.

LED
 specification-grade LED modules with integrated wide angle optics to minimize diffusion depth and increase illumination uniformity. 90+ CRI. L80>72,000 hrs. 3000K, 3500K, 4000K.

driver
 integral, programmable, UL class P, class2, universal input (120-277v), constant current, 0-10v controllable, 1% minimum dimming level. complies with Energy Star®, DLC (DesignLights Consortium™), and CA Title 24 technical requirements.

mounting
 designed to mount to 4 inch octagon junction box (by other). consult factory for installation instructions.

emergency
 recommend use of inverter (by other). optional WREM: wired for remote EM battery (by other).



only specific sizes

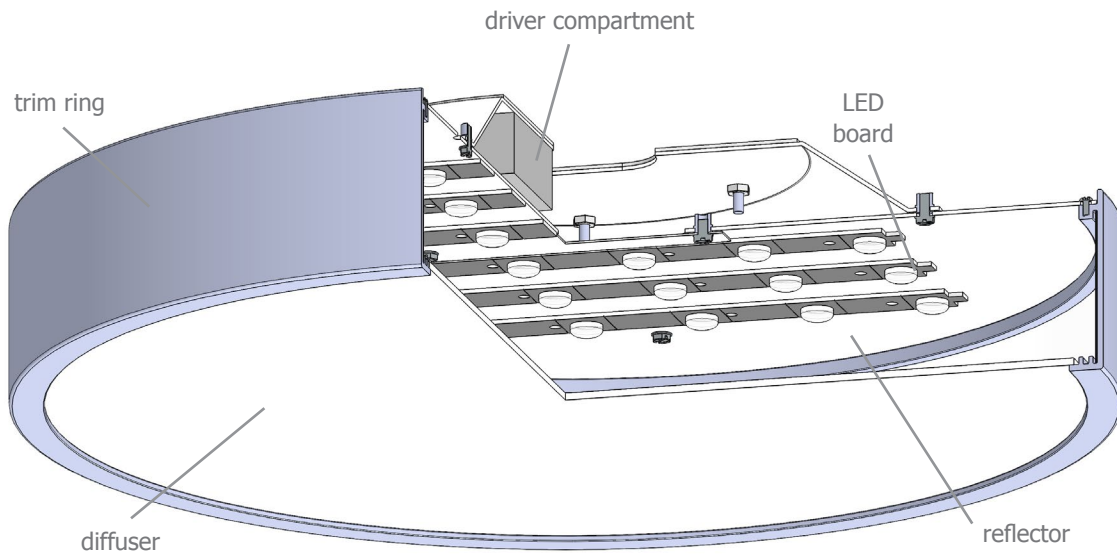
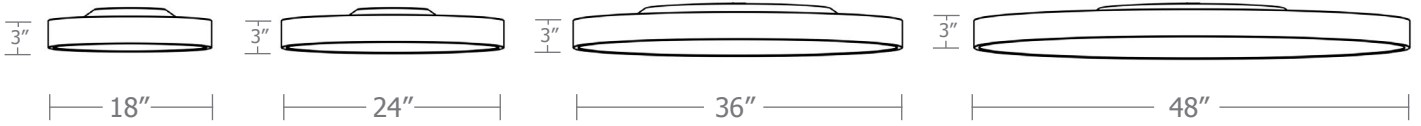
catalog number

--	--	--	--	--	--

size	CCT	lumens	painted finish	options
C5636	30 3000K	FX 4900 lm	AP anodized paint	UP uplight
C5636.BABA (3ft) 36" dia X 3" ht	35 3500K	LO 7400 lm	BS brass	WREM wired for remote EM battery pack (by other) (see note above)
	40 4000K	HI 9200 lm	BU blue	
		HX 13900 lm	BZ bronze	ELD EldoLED*
		CL xxxx lm custom lumens consult factory 4900 - 13900 lm	GM gun metal	LUT Lutron* *consult factory
	RGBW35*	FB flat black		
	TW2765*	MW matte white		
		OR orange		
		RD red		
		SB satin black		
		SS satin silver		
		TG textured gray		
		YO yellow		
		premium finish		
		RAL specify RAL#		
		wood finish		
		ASH ashwood		
		ENG english brown oak		
		ESP espresso		
C5648	30 3000K	FX 8100 lm		
(4ft) 48" dia X 3" ht	35 3500K	LO 11600 lm		
	40 4000K	HI 14800 lm		
		HX 23000 lm		
		CL xxxx lm custom lumens consult factory 8100 - 23000 lm		
	RGBW35*	RGBW 3500K		
	TW2765*	tunable white 2700K - 6500K		
	<small>*see page 4 for more information</small>			

This product meets the guidelines for the Build America, Buy America Act. Some Exclusions Apply. For more information and full list of eligible SKUs, please contact the factory at info@impactitg.com





consult factory for size-specific
installation instructions



wāf.r.3™ ceiling RGBW spec sheet 90CRI

material

trim ring

wafer thin 3”h roll formed aluminum extrusion. 6061 T1 alloy. .100 typ. wall. available in 15 standard powder coat paint finishes listed below. premium RAL and wood finishes also available.

diffuser

satintec WD855 minimum 72% light transmission, light scattering, glare reduction, colorless diffusion acrylic.

optics

reflector

.064” aluminum array platform painted high reflectance (>92%) matte white powder coat provides 100% downlight. for uplight, specify under options.

LED

RGBW Fingerboards combine architectural grade white LEDs with a 3-in-1 RBG LED to provide practical Nominal White Output at 1568 lm/board AND beautifully accented light with Excellent Color Consistency. The 10.6” x 10.6” RGBW fingerboards feature 8 Fingers cuttable every 1/2 Finger, On-board Poke-in Connectors, and a Self-Adhesive backing.

driver (remote)

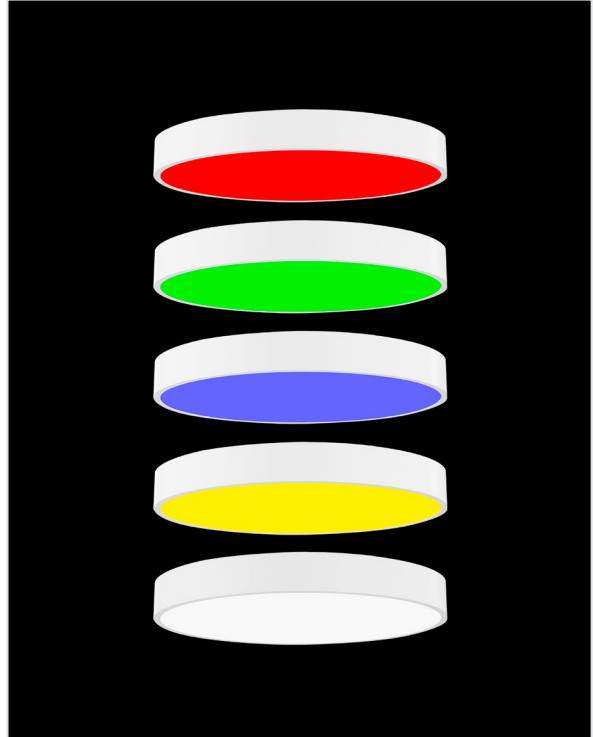
Infinite color control, enabling stunning lighting effects with Constant Voltage LEDs for architectural lighting applications. Whether single color for accent, Tunable White for Circadian applications, or full color RGB for entertainment product solutions, these drivers provide flicker-safe dimming to 1% with DALI or DMX and allows you to create your color or dynamic show without an external controller. Additionally, these LED drivers work seamlessly with other controls, and intelligent luminaire elements.

mounting

designed to mount to 4 inch octagon junction box (by other). consult factory for installation instructions.

finish

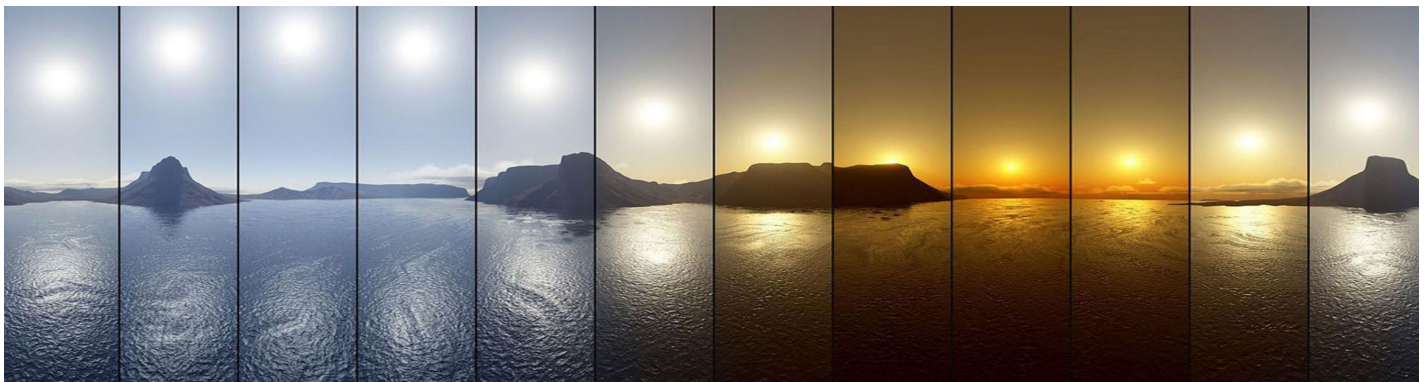
select from 15 standard powder coat paint finishes listed below. premium RAL and wood finishes also available.



wāf.r.3 ceiling TW2765™ spec sheet 90CRI

LED

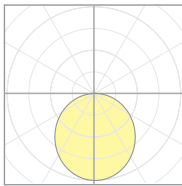
high performance tunable white spec-grade LED modules for excellent circadian lighting effects. from 2700K – 6500K CCT and anywhere in between with beautiful uniform color blending. with 2 channel constant current architecture, this high performance LED module provides the versatility needed to bring tunable white capability to any architectural application.



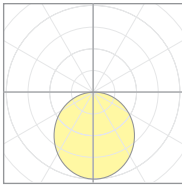
Calculation Table

The application of a Light Loss Factor is required to:

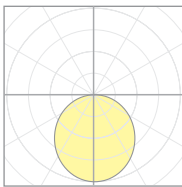
- match the lumen output for the power module specified
- incorporate the increased lumen output due to LED/Driver upgrades



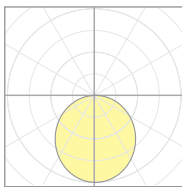
L062510501
P5618-40HI



L062510503
P5624-40HI



L062510504
P5636-40HI

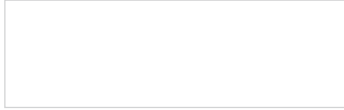


L062510505
P5648-40HI

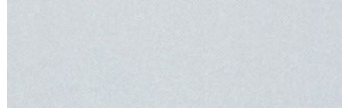
Cat No	Delivered* Lumens	Watts 120V / 277V	IES File #	LLF to be applied
C5618 FX	1350	15	L06251051	.43
C5618 LO	2350	30	L06251051	.74
C5618 HI	2700	36	L06251051	.85
C5624 FX	2700	27	L06251053	.43
C5624 LO	4100	43	L06251053	.65
C5624 HI	4900	52	L06251053	.77
C5624 HX	7000	79	L06251053	1.11
C5636 FX	4900	47	L06251054	.40
C5636 LO	7400	70	L06251054	.60
C5636 HI	9200	90	L06251054	.74
C5636 HX	13900	148	L06251054	1.12
C5648 FX	8100	72	L06251055	.39
C5648 LO	11600	107	L06251055	.56
C5648 HI	14800	142	L06251055	.72
C5648 HX	23000	231	L06251055	1.12

*delivered lumens based on 4000K, 90+ cri

Powder Coat Paint Finishes



MW matte white



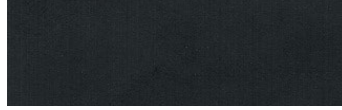
AP anodized paint



SS satin silver



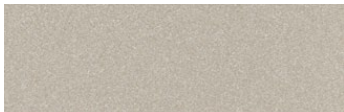
TG textured gray



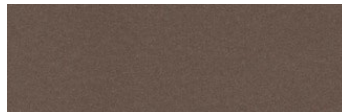
FB flat black



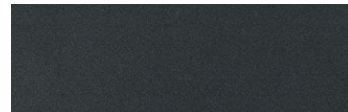
SB satin black



CP champagne



BZ bronze



GM gun metal



OR orange 2011



BU blue 5017



BS brass



RD red 3020



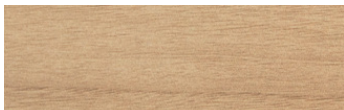
YO yellow 1018



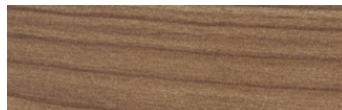
MB military blue

Premium Finishes*

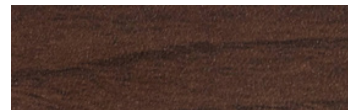
Wood Finishes



ASH ashwood



ENG english brown oak



ESP espresso

For accurate color verification, actual finish samples are available upon request.



RAL#

*Available on select series. Consult product submittal for availability.

